

# TENDER BULLETIN

NO. 39 OF 2024/2025 FY  
REF: 10/3/6/5

17 January 2025



# LIMPOPO

**PROVINCIAL GOVERNMENT**  
REPUBLIC OF SOUTH AFRICA

This document is also available on the following website:  
[www.limtreasury.gov.za](http://www.limtreasury.gov.za)

# Provincial Supply Chain Management Office

## TABLE OF CONTENTS

	Page No.
1. REPORTING FRAUDULENT AND CORRUPT ACTIVITIES .....	03
2. INSTRUCTIONS.....	04
3. BID INVITATIONS .....	05
4. AWARDED BIDS.....	06 - 13
5. ADDENDUM .....	14
6. EXTENSION.....	15
7. ERRATUM.....	16
8. GENERAL NOTICES.....	17
ANNEXURE 1: ADDRESS LIST AND CONTACT DETAILS: PROVINCIAL DEPARTMENTS.....	18 -19
ANNEXURE 2: ADDRESS LIST AND CONTACT DETAILS: PUBLIC ENTITIES .....	20 - 21
ANNEXURE 3: ADDRESS LIST AND CONTACT DETAILS: PROVINCIAL TREASURY SCM CLIENT SUPPORT CENTRES .....	22
8. SELF REGISTRATION PROCESS.....	23

**REPORT**

***FRAUDULENT & AND CORRUPT ACTIVITIES IN THE GOVERNMENT PROCUREMENT SYSTEM***

---

***National Anti-Corruption @ 0800 701 701***

***Security and Investigating Services – Limpopo Provincial Treasury @ 015 298 7196***

---

***ALL COMPLAINTS/CONCERNS RELATED TO SCM NON-COMPLIANCE MUST BE REPORTED TO:***

***LIMPOPO PROVINCIAL TREASURY***

***PRIVATE BAG X 9486***

***POLOKWANE***

***0700***

***PROVINCIAL TREASURY, FINANCE HOUSE, 56 – 58 PAUL KRUGER STREET, POLOKWANE***

**2. INSTRUCTIONS**

1. Bidders are advised to read the entire tender bulletin.
2. Tenders for procurement of supplies, services and disposals are categorized as follows:

**SUPPLIES**

- Accommodation, leasing of
- Audio visual equipment
- Building material
- Chemicals: Agricultural/Forestry/
- Laboratory/Water Care
- Clothing/Textiles
- Computer equipment
- Computer software
- Electrical equipment
- Electronic equipment
- Furniture
- General
- Medical
- Office equipment: Labour-saving devices
- Perishable provisions
- Stationary/printing
- Steel
- Timber
- Vehicle (all types)
- Workshop equipment

**SERVICES**

- Building
- Civil
- Electrical
- Functional (including cleaning-, and security services)
- General
- Maintenance of electrical, mechanical
- Equipment and plumbing
- Mechanical
- Professional
- Repair and maintenance of vehicles
- Transport

**DISPOSALS**

- Clothing and textiles
- Furniture
- General
- Scrap metal
- Vehicles

3. Bid documents are generally available in English only.
4. The address where a bid document is available from and where it must be submitted to may differ.
5. The addresses at which bid documents may be obtained and tenders must be posted appear in Annexure 1.
6. The address list of various Supply Chain Management Advice Centers at which bid documents and tender bulletins may also be obtained, appears in Annexure 3; and
7. The address list of Supply Chain Management satellite offices at which tender bulletins may also be obtained, appear in Annexure 4.

3. BID INVITATIONS

BID NO.	DESCRIPTION OF SERVICE OR SUPPLIES	CONTACT DETAILS	BID DOCUMENT PRICE (NON-REFUNDABLE)	DUE AT 11H00	BID DOCUMENTS OBTAINABLE FROM	POST OR DELIVER BIDS TO  (See Annexure 1 & 2)
LGB01/09/2024/25RFB	<p>Appointment of panel of five (5) travel agencies to provide travel management services to the Limpopo Gambling Board for a period of three (3) years.</p> <p><b><u>Compulsory briefing session</u></b>  <b>Date:</b> 24/01/2025  <b>Time:</b> 10H00  <b>Venue:</b> No.8 Hans Van Rensburg Street, Polokwane</p> <p><b>LIMPOPO GAMBLING BOARD</b></p>	<p><b><u>Bidding process:</u></b></p> <p>Mr. Duncan Mohale                      Tel no. 015 230 2315                      Email: Malesiba@lgb.co.za</p> <p><b><u>Technical aspects:</u></b></p> <p>Mr. Mphengwa Legodi                      Tel no. 015 230 2314                      Email: <a href="mailto:Legodi@lgb.co.za">Legodi@lgb.co.za</a></p>	FREE	10/02/2025	<p><a href="http://www.lgb.co.za">www.lgb.co.za</a></p> <p><b><u>OR</u></b></p> <p><a href="http://www.etenders.gov.za">www.etenders.gov.za</a></p>	113

4. AWARDED BIDS

4.1. GATEWAY AIRPORTS AUTHORITY LIMITED

BID NO	AWARDED BIDDER	PROJECT DESCRIPTION	BID OFFER	POINTS SCORED	DATE AWARDED
GAAL/097/2022/2023	Mbofhano Group (Pty) Ltd.	Phase II Implementation of GAAL Approved and Acceptance of the Quotation in line with Annexure A: Detailed Specification Guideline for Repairs and/or Servicing, as well as Maintenance of the Chiller Plant Unit.	R 6 075 512.38	90.00	13 December 2024

4.2. DEPARTMENT OF EDUCATION

	BID NO.	DESCRIPTI ON	ADVERT PERIOD		SUPPLIER(S)	AMOUNT	TOTAL SCORED ATTAIN ED	DATE OF AWARD
			DATE OF ADVERT	CLOSIN G DATE				
1	LDE/B10/2023/24	SUPPLY AND DELIVERY OF FOODSTUFF FOR PRIMARY AND SECONDARY: QUINTILE 1-3 FOR THE LIMPOPO DEPARTMENT OF EDUCATION FOR A PERIOD OF THREE (3) YEARS	15 MARC H 2024	23 APRIL 2024	VHUSO GENERAL TRADING (PTY)LTD	PRE-DETERMIN ED RATES	99,00	19 DECEMBER 2024
2					VALOTYPE 167		98,00	
3					EULITSAKI CONSTRUCTION AND CLEANING ENTERPRISE		98,00	
4					MGUMBANI BUSINESS T/A KTN PROTECTION SERVICES		98,00	
5					BASETSANA BA KOPANE BOOKSHOP ENTERPRISE AND CATERING (PTY) LTD		98,00	
6					BOKGAKGA CONSTRUCTION AND PROJECTS		98,00	
7					MOLOGADI A MOGALE		98,00	
8					SHAMHUNTI MARKETING AND SUPPLIERS		98,00	
9					LEFATSHE LARONA TRADING AND PROJECTS 34		98,00	
10					NEKAI CREATIONS		98,00	
11					CHIKUNI STATIONERY AND WELFARE SERVICES		98,00	
12					MAKGELEDISA BUSINESS ENTERPRISE		97,70	

13					THAKGA DITSHABA TRADING AND PROJECTS PRIMARY CO-OPERATIVE	97,40
14					BLACK AND TRADING (PTY)LTD	97,00
15					DIYATA DITSHABA (PTY)LTD	97,00
16					LEKGOHWANE RAMASELA TRADING ENTERPRISE	97,00
17					NKUDU CONSTRUCTION AND SUPPLIER	97,00
18					NWA BUSANA TRADING AND PROJECTS (PTY) LTD	97,00
19					N'WA MHLAVE TRADING ENTERORISE	97,00
20					NTIYISO TRANSPORT BUSINESS ENTERPRISE	97,00
21					MAANOANGA TRADING ENTERPRISE	97,00
22					KKKI CONSTRUCTION PTY LTD	97,00
23					ULULAMILE LOGISTICS AND PROJECTS JV MUHLUKHE INVESTMENTS	97,00
24					RIVONI CLEANING SERVICES CC	97,00
25					ZINJIVHA BUILDING CONSTRUCTION CC	97,00
26					PRIME AFRICA TRADING ENTERPRISE (PTY)LTD	97,00
27					SECURELIFE SECURITY SERVICES	97,00
28					SAMBA SOLUTIONS JV RONEWA	96,92
29					VIKELA GUARDING SERVICES	97,00
30					AFRICAN HOLDING LOGISTICS (PTY) LTD	96,70
31					AWOG TEAM SOLUTIONS JV YANGA ENVIRONMENTAL SERVICES	96,50
32					CHOSEN MULTIPURPOSE (PTY) LTD	96,10
33					ABC EVENTS AND COMMUNICATIONS	96,10

34				LEKGOPELA BUSINES ENTERPRISE	96,06
35				NTSHIZAS TECHNICAL SERVICES	96,00
36				TULACOL (PTY)LTD	96,00
37				PARIPHASE PTY LTD	96,00
38				SKY BLUE SUCCESS (PTY)LTD	95,60
39				THENJENI HOLDINGS (PTY)LTD	95,50
40				YBG CONSTRUCTION AND PROJECTS	95,20
41				KMA BUSINESS CONSULTING	95,20
42				THE NOBES EXCELLENT LOGISTICS	95,06
43				NOLOS ZA JV	95,04
44				BAHLURI TRADING AND PROJECTS	95,00
45				HIAKILE HOLDINGS (PTY)LTD	95,00
46				BAGMA ROAD/ROADLOCK J/V	95,00
47				DIMACAY TRADING ENTERPRISE	95,00
48				DOLABREND TRADING (PTY)LTD	95,00
49				GATHSMAN CONSTRUCTION AND PROJECTS	95,00
50				HERMIGLO (PTY)LTD	95,00
51				KANJO BUSINESS ENTERPRISES	95,00
52				KGAHLODI CATERING AND PROJECTS	95,00
53				MAHLAKANO TRADING ENTERPRISE	95,00
54				MAMAHAPA TRADING (PTY)LTD	95,00
55				MAPSILORAMS GROUP	95,00
56				BASONIA TRADING ENTERPRISE	95,00
57				KUHLULA RIFUMO HOLDINGS	95,00
58				MATHARA INVESTMENTS JV MARU ENGINNERS	95,00
59				MOKHUTLOANE TRADING ENTERPRISE	95,00
60				MOLAMO TRADERS	95,00
61				NSUKAY TRADING PROJECTS	95,00
62				PAKANA INVESTMENTS (PTY)LTD	95,00



**LIMPOPO PROVINCIAL TENDER BULLETIN NO 39 of 2024/25 FY 17 JANUARY 2025**

63					PHUMZILE MPHELO SERVICES AND SUPPLIES	95,00	
64					SELETE TRADING ENTERPRISE	95,00	
65					SETESHE GROUP	95,00	
66					LITTLE T INVESTMENT	95,00	
67					MAMAYILA TRADING ENTERPRISE	95,00	
68					MATIZVIEW GENERAL TRADING	95,00	
69					MUSHOMA SECURITY SERVICES AND PROJECTS CC	95,00	
70					REMBUWA TRADING	95,00	
71					MAMORATWA ENTERPRISE ,BOOKSHOP, CATERING AND SOCIAL CONSULTANCY	95,00	
72					KGOTSIKGOTSI PROJECT AND CATERING	95,00	
73					MSL SUPPLIERS & PROJECTS (PTY)LTD	95,00	
74					NKUMANI MULTI PROJECTS (PTY) LTD	95,00	
75					NWA BRA PAT LOGISTICS & PROJECT MANAGEMANENT	95,00	
76					SIZWANENG CONSTRUCTION AND PROJECTS	95,00	
77					LISHMOK GENERAL TRADING	94,60	
78					VUC INVESTMENTS PTY LTD	95,00	
79					ONE GROUP INVESTMENTS	94,60	
80					MOTSWAKO TRADING	94,60	
81					MMATLALA MULTI-TRADE SERVICES	94,52	
82					PHENYO YA KA TRADING ENTERPRISE	94,40	
83					KOPANANG RETHABILE TRADING (PTY)LTD	94,06	
84					KOTANI PROJECTS AND DRIP AND DRY JV	94,06	
85					MPHO 'S AIRCONDITION AND SERVICES	94,06	
86					LESEDI INVESTMENT PROJECTS	94,06	

				321(PTY)LTD JV KIDI M PROJECTS	
87				SEKOLO TRADING AND PROJECTS	94,06
88				TSA-TSHIDI TRADING	94,06
89				KOKO'S SUPPLIER AND PROJECTS	94,00
90				MONKWE DIETECTICS SERVICES	94,00
91				LERATO AND MOLOKO EVENT MANAGEMENT (PTY) LTD	94,00
92				OLDNEST TRADING AND PROJECTS	94,00
93				YABATHO TRANSPORT & ENTERPRISE JV	94,00
94				SIBASIBA MAINTANANCE SERVICES	94,00
95				LTONDI SECURITY SERVICES & PROJECTS (PTY)LTD	94,00
96				NYAMFOKO TRADING &PROJECTS	93,80
97				UPTOWN TRADING 492	93,40
98				LEB ONE LOGISTICS AND DISTRIBUTIONS	93,40
99				EVERCLEAN SERVICES (PTY) LTD	93,04
100				MATHOMOMAYO INVESTMENT HOLDINGS T/A MAXIMUM SECURITY	93,04
101				CATCH 22 INVESTMENTS CC	93,00
102				CKM DEVELOPERS (PTY)LTD	93,00
103				CHARLIESHIBOMBHI TRADING ENTERPRISE(PTY)LTD	93,00
104				MVUDI PARK TRADING 40	93,00
105				VHUDELE CONSTRUCTION AND PROJECTS	93,00
106				VHUNENE CONSTRUCTION AND PROJECTS (PTY) LTD	93,00
107				MAHLUKUSI BUSINESS ENTERPRISE CC	93,00
108				MDAKA M HOLDINGS	93,00
109				KODEA INVESTMENT (PTY) LTD	93,00
110				LONERON	93,00
111				BOHLATSE TRADING AND PROJECTS CC	93,00

112				NONCHALANT PROJECTS AND DEVELOPMENT	93,00	
113				RENO COMP	93,00	
114				XALAMUKA BUILT ENVIRONMENT (PTY) LTD	93,00	
115				MAKOSHA CONSTRUCTION AND PROJECTS	93,00	
116				MANOTIME PTY LTD	93,00	
117				MAVESTRA CONSTRUCTION AND CLEANING SERVICES JV JANALEX TRADING	93,00	
118				MOLOOK'S CIVILS	93,00	
119				NDLOPFU BROS (PTY)LTD	93,00	
120				PICABIZ 367 CC	93,00	
121				SHABARENG CONSULTING AND PROJECTS	93,00	
122				KUMBATIA HOLDINGS	93,00	
123				THOLANG KHUTSO TRAND AND PROJECTS 89	93,00	
124				LWELI HOLDINGS /KKS WEALTH CREATION	92,80	
125				SILIDI PROJECTS	92,20	
126				MUKHUMULI (PTY)LTD	92,02	
127				KONY TRADING AND PROJECTS (PTY)LTD	92,00	
128				LENDELAM TRADING AND PROJECTS	92,00	
129				BOGOSHI MAGOSHI TRADING AND PROJECTS (PTY) LTD	92,00	
130				DIRANE TRADING (PTY) LTD	92,00	
131				DISTANT STAR TRADING 463 CC	92,00	
132				MAREKETLE GENERAL TRADING	92,00	
133				MMINA TAU CONSTRUCTION	92,00	
134				NKUNKUNYANE TRADING ENTERPRISE	92,00	
135				TSHEGANE BUSINESS ENTERPRISE CC	92,00	
136				LILITHALETHU TRADING 41	92,00	
137				HLOMPHO IT AND PROJECTS JV BASIE CIVILS AND PROJECTS	92,00	

138					RAMAGELI CONSTRUCTION AND OTHERS JV MILLION TRADING AND PROJECT	91,30	
139					CAMITYPE	91,00	
140					CASCADE PIVOTAL PROJECTS	91,00	
141					CLYROTRIX (PTY)LTD	91,00	
142					DOZER BRAZ CONSTRUCTION	91,00	
143					EMPINET INVESTMENTS	91,00	
144					FHATANANI MANAGEMENT SERVICES	91,00	
145					GERSON MATAMELA (PTY) LTD	91,00	
146					J AND R ACCOUNTATS	91,00	
147					JAMNAR CONSTRUCTION & PROJECTS	91,00	
148					EDU SOLUTION BOOKSHOP CC	91,00	
149					INTERGRATE NOW (PTY)LTD	91,00	
150					KWENABEL TRADING CC	91,00	
151					MABE MULTIPROJECTS	91,00	
152					MARIMBA MASEDI TRADING	91,00	
153					MASETEN LEBOWAKGOMO LDP	91,00	
154					MASETEN TRADING ENTERPRISE	91,00	
155					MBATHA INVESTMENT(PTY) LTD	91,00	
156					MOTEME TRADING ENTERPRISE CC	91,00	
157					HLOSKA GROUP PTY LTD	91,00	
158					K DIALE TRADING ENTERPRISE CC	91,00	
159					MAPHUTHA BUSINESS ENTERPRISE	91,00	
160					OXY TRADING 290	91,00	
161					DUVHA HOLDING(PTY)LTD	91,00	
162					RISIMA PROJECT MANAGEMENT	91,00	
163					T2-TECH ENGINEERS (PTY)LTD	91,00	
164					TLOPO CONSTRUCTION AND GENERAL SERVICES	91,00	

165					MAZAXA CONSTRUCTION AND PROJECTS	91,00	
166					MPHEPHU SECURITY SERVICES (PTY )LTD	91,00	
167					MTR 404 SUPPLY AND PROJECTS	91,00	
168					MUPO WASHU ENVIRONMENT CONSULTANT	91,00	
169					KATLIN CONSTRUCTION CC	91,00	
170					MORWA MOGALE TRADING ENTERPRISE	91,00	
171					TODANI (PTY)LTD	91,00	
172					WAVHUDI UHONE TRADING 870	91,00	
173					MAKORONYA GENERAL TRADING	91,00	
174					WESTERN ICON 108	91,00	
175					WITHIN AFRICA CONSTRUCTION	91,00	
176					MPHELA A PHELEGO TRADING AND TRANSPORT	91,00	
177					MJB SECURITY AND PROJECTS	91,00	
178					SHON TECHNOLOGIES CC	91,00	
179					TUBATSE ART DESIGNER	91,00	
180					NJOMBO MABASA TRADING AND PROJECTS SOMBS JV	90,00	
181					SWIKHESO TRADING AND PROJECTS	91,00	
182					BAKGOTSI BA KOPANE TRADING AND PROJECTS JV MBILENI TRADING	90,00	

**5. ADDENDUM**

**5.1 DEPARTMENT OF PUBLIC WORKS, ROADS AND INFRASTRUCTURE**

**ADDENDUM ON THE PROVINCIAL TENDER BULLETIN FOR TERMS OF REFERENCE FOR THE APPOINTMENT OF PROFESSIONAL CONSULTANT TO DEVELOP A LEVEL 1 INTERGRATED DISASTER MANAGEMENT PLAN FOR ROADS INFRASTRUCTURE ACROSS 05 DISTRICTS WITHIN LIMPOPO PROVINCE FOR A PERIOD OF 12 MONTHS. LDPWRI-R/20462 AND NEW CLOSING DATES.**

1. The Department published the above-mentioned bid on the 06 DECEMBER 2024, on Tender Bulletin No: 37 of 2024/2025 FY.
2. Your office is requested to notify all bidders of the following:
  - On page 05 F.1.1 (a) Occupational health and Safety Consultants companies with experience in medical screening and occupational health and safety in roads infrastructure projects does not form part of the tendering procedure so it must be ignored.

NB: Based on the above mention information the NEW CLOSING DATES FOR LDPWRI-R/20462 WILL BE AS FOLLOWS:

Previous closing dates	New closing dates	Bid number
20 JANUARY 2025	28 JANUARY 2025	LDPWRI-R/20462

**6. EXTENSION**

**6.1 GATEWAY AIRPORTS AUTHORITY LIMITED**

**EXTENSION OF VALIDITY PERIOD**

**DESCRIPTION: APPOINTMENT OF PANEL OF ATTORNEYS TO PROVIDE LEGAL SERVICES AS AN WHEN REQUIRED FOR A PERIOD OF THREE YEARS.**

1. Gateway Airports Authority Limited is extending the bid's validity period by an additional sixty (60) days.

<b>Bid Advertised in Provincial Tender Bulletin No.</b>	<b>Validity Expiration date</b>	<b>Validity Extension date</b>	<b>Extension period</b>
16 of 2024/2025	22 January 2025	21 March 2025	60 days

2. The bid's validity period has been extended for the Entity to complete the evaluation, adjudication, and preselection of the panel.
3. You are therefore requested to accept /or not accept in writing an extension of the validity period before 22 January 2025.

**7. ERRATUM**

**7.1 CO-OPERATIVE GOVERNANCE HUMAN SETTLEMENTS & TRADITIONAL AFFAIRS**

<b>BID NO.</b>	<b>PROJECT DESCRIPTION</b>	<b>CLOSING DATE ON THE TENDER BULLETIN</b>	<b>NEW INFORMATION ON THE CLOSING DATE</b>
CoGHSTA B18 / 2024-25 FY	The establishment of database for service providers (professional Town and Regional Planners & Regional Planners and Land Surveyors) for Township Establishment / Demarcation of sites for informal settlements upgrading over a period of three (3) years (2025/26 until 2027/28 financial years).	04 Feb. 2024	04 Feb. 2025
CoGHSTA B21 / 2024-25 FY	Establishment for a panel of service providers (contractors for construction of low-cost houses (BNG) over s period of three (3) years.	05 Feb. 2024	05 Feb. 2025
CoGHSTA B23 / 2024-25 FY	Procurement of office furniture for 24 Traditional Councils.	06 Feb 2024	06 Feb. 2025
CoGHSTA B19 / 2024-25 FY	The establishment for engineering consultants to conduct geotechnical investigation, design and install engineering services (Turnkey Contract) in Limpopo Province for three (3) years.	04 Feb 2024	07 Feb. 2025
CoGHSTA B20 / 2024-25 FY	The establishment for engineering consultants to conduct geotechnical investigation phase and 2 in line with minimum requirements and in accordance with geotechnical sit investigation for housing development for a period of for three (3) years.	04 Feb 2024	10 Feb. 2025



8. GENERAL NOTICE

**LIMPOPO (SCM CLIENT SUPPORT CENTERS) CSD CALL CENTRE LINES FOR SUPPLIERS**

<b>DISTRICT</b>	<b>CALL NUMBER</b>	<b>CENTRE</b>	<b>OFFICIAL RESPONSIBLE</b>	<b>TIME</b>
Capricorn	015 291 8521		Ms. Rasilingwani M	07H30 TO 16H30
Mopani	015 812 0256		Mr. Molele MN	07H30 TO 16H30
Sekhukhune	013 265 1071		Mr. Sehale MS	07H30 TO 16H30
Vhembe	015 962 0014		Mrs. Manena A	07H30 TO 16H30
Waterberg	014 717 1376		Ms. Moloi R	07H30 TO 16H30

**ANNEXURE 1: ADDRESS LIST AND CONTACT DETAILS: LIMPOPO PROVINCIAL DEPARTMENTS**

UNIQUE REF. NO.	BID DOCUMENT REFERENCE	CONTACT DETAILS	DOCUMENTS SOLD AT:	DOCUMENTS DEPOSITED AT
100	DSDP	Tel: 015 293 6000 Fax: 015 293 6211 Website: <a href="http://www.limpopo.gov.za">www.limpopo.gov.za</a>	<b>Department of Social Development</b> , Office No. 57 Ground Floor, 21 Biccadd Street POLOKWANE	Deposited in the box located at the Department of Social Development, 21 Biccadd Street Polokwane
101	LPT	Tel: 015 298 7000 Fax: 015 295 7010 Website: <a href="http://www.limpopo.gov.za">www.limpopo.gov.za</a>	<b>Provincial Treasury</b> 46 Hans Van Rensburg Street, POLOKWANE and all Provincial Treasury Client Support Centres	Deposited in the bid box located outside a guard house at Ismini Towers, 46 Hans Van Rensburg Street, Polokwane
101A	TC/LP	Tel: 015 291 8400 Fax: 015 295 3310 Website: <a href="http://www.limpopo.gov.za">www.limpopo.gov.za</a>	<b>Provincial Treasury</b> 56 – 58 Paul Kruger Street, POLOKWANE and all Provincial Treasury Client Support Centres	Deposited in the bid box located at the main entrance, Finance House Building, 56-58 Paul Kruger Street, Polokwane
102	PRDP	Tel: 015 287 6000 Fax: 015 295 3840 Website: <a href="http://www.limpopo.gov.za">www.limpopo.gov.za</a>	<b>Office of the Premier</b> , 40 Hans van Rensburg Street, POLOKWANE and all SCM Client Support Centres	Deposited in the bid box located at Mowaneng Building, 40 Hans van Rensburg Street, Polokwane
103	HEDP	Tel: 015 293 6000 Fax: 015 293 6211 Website: <a href="http://www.limpopo.gov.za">www.limpopo.gov.za</a>	<b>Department of Health</b> , Office No. D3 Ground Floor, Old Capricorn Building, 18 College Street, POLOKWANE and all Provincial Treasury Client Support Centres	Deposited in the box located at Department of Health and Social Development, 18 College Street, Polokwane
104	LPEDT	Tel: 015 290 7600/1 Fax: 015 297 4494 Website: <a href="http://www.limpopo.gov.za">www.limpopo.gov.za</a>	<b>Department of Education</b> , Corner 113 Biccadd and 24 Excelsior Streets, POLOKWANE and all Provincial Treasury Client Support Centres	Deposited in the bid box located at the main entrance of corner 113 Biccadd Street and Excelsior Street, Polokwane
105	PUDP	Tel: 015 295 1000 Fax: 015 295 1163 Website: <a href="http://www.limpopo.gov.za">www.limpopo.gov.za</a>	<b>Department of Transport and Community Safety</b> , 40 Paul Kruger Street, POLOKWANE and all Provincial Treasury Client Support Centres	Deposited in the bid box located at 1 <sup>st</sup> Floor, Paul Kruger Wing, 40 Paul Kruger Street, Polokwane
106	COGHSTA	Tel: 015 294 2000 Fax: 015 295 4190 Website: <a href="http://www.limpopo.gov.za">www.limpopo.gov.za</a>	<b>Department of Co-Operative Governance, Human Settlements &amp; Traditional Affairs</b> , 28 Market Street, Office No. G 74, Ground Floor, Polokwane.	Deposited in the bid box located at Hensa Towers, Cnr of Rabe and Landdros Mare Streets, Polokwane
107	DSAC	Tel: 015 284 4000 Fax: 015 284 4514 Website: <a href="http://www.limpopo.gov.za">www.limpopo.gov.za</a>	<b>Department of Sport, Arts and Culture</b> Olympic Towers, Corner Rabe and Biccadd Street, POLOKWANE and all Provincial Treasury Client Support Centres	Deposited in the bid box located at the main entrance of Olympic Towers, Corner 21 Rabe and Biccadd Street, Polokwane

**LIMPOPO PROVINCIAL TENDER BULLETIN NO 39 of 2024/25 FY 17 JANUARY 2025**

108	LEDET	Tel: 015 293 8300 Fax: 015 293 8319 Website: <a href="http://www.limpopo.gov.za">www.limpopo.gov.za</a>	<b>Department of Economic Development, Environment &amp; Tourism</b> , 90 Bok Street, POLOKWANE and all SCM Client Support Centres	Deposited in the bid box located at the main entrance of Evridiki Towers, 19 Biccard Street, Polokwane
109	LDPW & WODP	Tel: 015 284 7000 Fax: 015 284 7031 Website: <a href="http://www.limpopo.gov.za">www.limpopo.gov.za</a>	<b>Department of Public Works, Roads and Infrastructure</b> ; Towers, 43 Church Street, POLOKWANE and all Provincial Treasury Client Support Centres	Deposited in the bid box located at Corner Blaawberg and River Street Ladanna Polokwane 0699 Private Bag X9490 Polokwane 0700
110	ACDP	Tel: 015 294 3000/30/60/90/20 Fax: 015 294 4506 Website: <a href="http://www.limpopo.gov.za">www.limpopo.gov.za</a>	<b>Department of Agriculture</b> , Temo Towers, 69 Biccard Street, POLOKWANE and all Provincial Treasury Client Support Centres	Deposited in the bid box located at the main entrance of AgriVillage, 69 Biccard Street, Polokwane

**ANNEXURE 2: ADDRESS LIST AND CONTACT DETAILS: LIMPOPO PUBLIC ENTITIES**

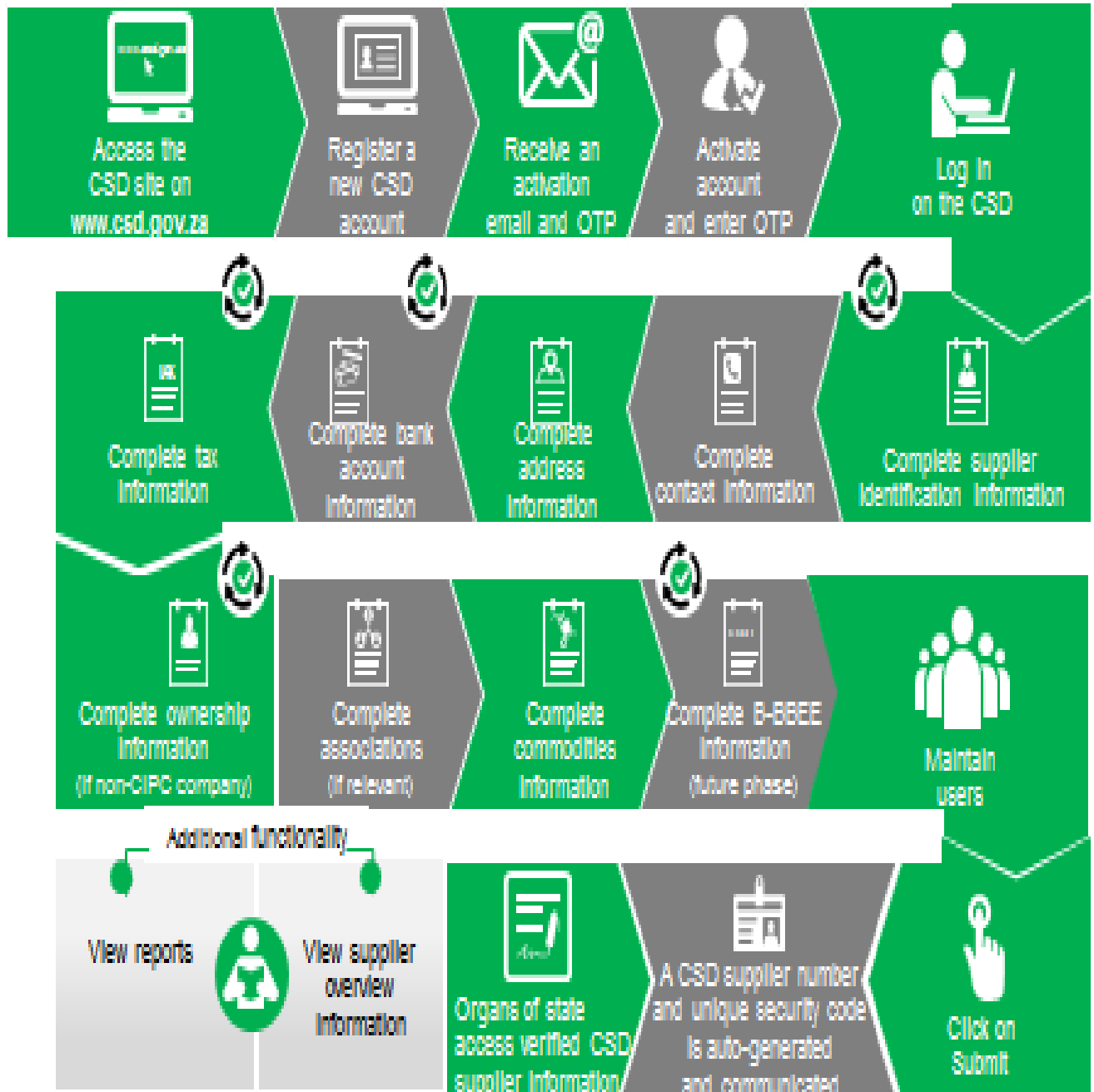
UNIQUE REF. NO.	BID DOCUMENT REFERENCE	CONTACT DETAILS	DOCUMENTS SOLD AT:	DOCUMENTS DEPOSITED AT
111	RFB: LIMP	Tel: 015 293 3621 Fax: 015 293 3660 Website: <a href="http://www.golimpopo.com">www.golimpopo.com</a>	<b>State Information Technology Agency (SITA)</b> Limpopo Office, Moolman Building, 27 Market Street, POLOKWANE, 0699	The bid box is located at the Main Entrance of the Moolman Building, 27 Market Street, Polokwane
112	LTA	Tel: 015 293 3600 Fax: 015 293 3655 Website: <a href="http://www.golimpopo.com">www.golimpopo.com</a>	<b>Limpopo Tourism Agency</b> , ERF 92/688, Portion 2 Southern Gateway, Ext 4, N1 Main Road, Polokwane 0699	The bid box is located in the offices ERF 92/688, Portion 2 Southern Gateway, Ext 4, N1 Main Road, Polokwane 0699
113	LGB	Tel: 015 295 5581 Fax: 015 295 3566 Website: <a href="http://www.lgb.org">www.lgb.org</a>	<b>Limpopo Gambling Board</b> , 08 Hans van Rensburg Street, POLOKWANE, 0699	The bid box is located at the main entrance, 8 Hans van Rensburg Street, Polokwane, 0699
114	LEDA	Tel: 015 633 4700 Fax: 015 633 4854 Website: <a href="http://www.leda.co.za">www.leda.co.za</a>	<b>Limpopo Economic Development Agency</b> Enterprise Development Finance, Main Road Lebowakgomo	The bid box is located at the main entrance, Enterprise Development Finance, Main Road Lebowakgomo
115	RAL	Tel: 015 284 4600 Fax: 015 284 4701 Website: <a href="http://www.ral.co.za">www.ral.co.za</a>	<b>Road Agency Limpopo (RAL)</b> , RAL Towers, 26 Rabe Street, POLOKWANE, 0700	The bid box located in the entrance foyer (ground floor) of RAL Towers, at 26 Rabe Street, Polokwane
116	GAAL	Tel: 015 288 0122 Fax: 015 288 0346 Website: <a href="http://www.gaal.co.za">www.gaal.co.za</a>	<b>Gateway Airports Authority Limited</b> , N1 Road to Louis Trichardt, Army Base, POLOKWANE International Airport, Polokwane, 0700	The bid box is located in the main entrance, the ground floor of the administration building, Polokwane International Airport, Army Base
117	VIVET	Tel: 015 963 3156 Fax: 015 963 3154 Website: <a href="http://www.vhembecollege.edu.za">www.vhembecollege.edu.za</a>	<b>Vhembe TVET College</b> , Central Office, Site No 203 SIBASA 0970	<b>Vhembe TVET College</b> , Central Office, Site No 203 SIBASA 0970
118	WTVET	Tel: 015 491 8581/8602 Fax: 015 491 8579 Website: <a href="http://www.procurement@waterbergcollege.co.za">www.procurement@waterbergcollege.co.za</a>	<b>Waterberg FET College</b> , Central Office, 36 Hooqe Street Street, Mokopane, 0600	<b>Waterberg FET College</b> , Central Office, 36 Hooqe Street Street, Mokopane, Private Bag x 2449, Mokopane 0600
119	GNT	Tel. 015 291 2641 Fax. 015 291 2648	No. 130a Marshall Street, Polokwane.0700	Great North Transport No. 130 Marshall Street, Polokwane.0700
120	MT	Tel. 015 2907715/7772	<b>Mvula Trust</b> 25 Rhodesdrift Street, Rhodesdrift Office Park, Bendor Ext 30, Polokwane	<b>Mvula Trust</b> 25 Rhodesdrift Street, Rhodesdrift Office Park, Bendor Ext 30, Polokwane
121	CCTVET	Tel.015 230 1800 Fax. 015 291 2767	Capricorn College for TVET 16 Market Street, Polokwane	Private Bag Bag X9674 Polokwane0700
122	IDT	Tel: 015 295 0000 Fax: 015 295 6559	<b>Independent Development Trust</b>	<b>Independent Development Trust</b> P.O.Box 55386

			22 Hans van Rensburg Street, Polokwane, 0700	Polokwane 0700
123	DBSA	scmqueries@dbsa.org	<b>Development Bank of Southern Africa</b> Welcome Centre 1258 Lever Road Midrand	<b>Development Bank of Southern Africa</b> Welcome Centre 1258 Lever Road Midrand
124	MMSEZ	www.mmsez.co.za	<b>Makhado Musina Special Economic Zone</b> 93 Biccard Street, Polokwane, 0699	<b>Makhado Musina Special Economic Zone</b> 93 Biccard Street, Polokwane, 0699

**ANNEXURE 3: ADDRESS LIST AND CONTACT DETAILS: PROVINCIAL TREASURY SCM CLIENT SUPPORT CENTRES**  
 (CSD registration, assistance with SBD forms completion, and copies of the Provincial Tender Bulletin can be accessed from the following Limpopo Provincial Treasury District Centers):

<b>PROVINCIAL TREASURY SUPPLY CHAIN MANAGEMENT CLIENT SUPPORT CENTRES</b>	
<p><b>HEAD OFFICE</b></p> <p>SCM CLIENT SUPPORT                      56 – 58 Paul Kruger Street                      POLOKWANE                      Private Bag x9494  <b>POLOKWANE, 0700</b>  <b>Tel No. (015) 291 8400</b></p> <p>Contact: <b>Ms. L. D. Msimeki @ Tel: 015 291 8755</b></p>	<p><b>Capricorn SCM Client Support Centre</b></p> <p>Limpopo Provincial Treasury                      56-58 Paul Kruger Street                      Private Bag x9494  <b>POLOKWANE, 0700</b>  <b>Tel No. (015) 291 8400</b></p> <p>Contact Person : <b>Ms. Rasilingwani M</b></p>
<p><b>Vhembe SCM Client Support Centre</b></p> <p>Limpopo Provincial Treasury                      Government Building Complex                      BLOCK E GROUND FLOOR  <b>THOHOYANDOU, VENDA</b>                      Tel: (015) 962 1752                      Fax : (015) 962 1282</p> <p>Contact Person : <b>Ms. A Manena</b></p>	<p><b>Mopani SCM Client Support Centre</b></p> <p>Limpopo Provincial Treasury                      Private Bag X 1973  <b>GIYANI, 0826</b>                      Tel : (015) 812 0149                      Fax : 086 219 7905</p> <p>Contact Person : <b>Mr. M.N. Molele</b></p>
<p><b>Waterberg SCM Client Support Centre</b></p> <p>Limpopo Provincial Treasury                      98 Nelson Mandela Street                      Decimale Building  <b>MODIMOLLE</b>                      Tel: (014) 717 5837                      Fax: (014) 717 5670</p> <p>Contact Person : <b>Ms. R Moloji</b></p>	<p><b>Sekhukhune SCM Client Support Centre</b></p> <p>Limpopo Provincial Treasury                      Lefa Centre, Schoonoord Road  <b>JANE FURSE</b>                      Tel: (013) 265 1344                      Fax: (013) 265 1354</p> <p>Contact Person: <b>Mr. M. S. Sehale</b></p>

# Supplier Self-Registration Process



Auto verification of supplier information with SARS, CIPC etc.