

# TENDER BULLETIN

NO. 22 OF 2023/2024 FY  
REF: 10/3/6/5

01 SEPTEMBER 2023



# LIMPOPO

**PROVINCIAL GOVERNMENT**  
REPUBLIC OF SOUTH AFRICA

This document is also available on the following website:  
[www.limtreaury.gov.za](http://www.limtreaury.gov.za)

# Provincial Supply Chain Management Office

## TABLE OF CONTENTS

	Page No.
1. REPORTING FRAUDULENT AND CORRUPT ACTIVITIES .....	03
2. INSTRUCTIONS.....	04
3. BIDS INVITATIONS .....	05-06
4. ERRATUM .....	07
5. CANCELLATIONS .....	08
6. SPECIAL NOTICE .....	09
8. GENERAL NOTICE.....	10
ANNEXURE 1: ADDRESS LIST AND CONTACT DETAILS: PROVINCIAL DEPARTMENTS.....	11 - 12
ANNEXURE 2: ADDRESS LIST AND CONTACT DETAILS: PUBLIC ENTITIES .....	13- 14
ANNEXURE 3: ADDRESS LIST AND CONTACT DETAILS: PROVINCIAL TREASURY SCM CLIENT SUPPORT CENTRES .....	15
8. SELF REGISTRATION PROCESS.....	16

**REPORT**

**FRAUDULENT & AND CORRUPT ACTIVITIES IN THE GOVERNMENT PROCUREMENT SYSTEM**

---

***National Anti-Corruption @ 0800 701 701***

***Security and Investigating Services – Limpopo Provincial Treasury @ 015 298 7196***

---

**ALL COMPLAINTS/CONCERNS RELATED TO SCM NON-COMPLIANCE MUST BE REPORTED TO:**

**LIMPOPO PROVINCIAL TREASURY**

**PRIVATE BAG X 9486**

**POLOKWANE**

**0700**

**PROVINCIAL TREASURY, FINANCE HOUSE, 56 – 58 PAUL KRUGER STREET, POLOKWANE**

## **2. INSTRUCTIONS**

1. Bidders are advised to read the entire tender bulletin.
2. Tenders for procurement of supplies, services and disposals are categorized as follows:

<p><b>SUPPLIES</b></p> <ul style="list-style-type: none"><li>▪ Accommodation, leasing of</li><li>▪ Audio visual equipment</li><li>▪ Building material</li><li>▪ Chemicals: Agricultural/Forestry/</li><li>▪ Laboratory/Water Care</li><li>▪ Clothing/Textiles</li><li>▪ Computer equipment</li><li>▪ Computer software</li><li>▪ Electrical equipment</li><li>▪ Electronic equipment</li><li>▪ Furniture</li><li>▪ General</li><li>▪ Medical</li><li>▪ Office equipment: Labour-saving devices</li><li>▪ Perishable provisions</li><li>▪ Stationary/printing</li><li>▪ Steel</li><li>▪ Timber</li><li>▪ Vehicle (all types)</li><li>▪ Workshop equipment</li></ul>	<p><b>SERVICES</b></p> <ul style="list-style-type: none"><li>▪ Building</li><li>▪ Civil</li><li>▪ Electrical</li><li>▪ Functional (including cleaning-, and security services)</li><li>▪ General</li><li>▪ Maintenance of electrical, mechanical Equipment and plumbing</li><li>▪ Mechanical</li><li>▪ Professional</li><li>▪ Repair and maintenance of vehicles</li><li>▪ Transport</li></ul> <p><b>DISPOSALS</b></p> <ul style="list-style-type: none"><li>▪ Clothing and textiles</li><li>▪ Furniture</li><li>▪ General</li><li>▪ Scrap metal</li><li>▪ Vehicles</li></ul>
--	---
3. Bid documents are generally available in English only.
4. The address where a bid document is available from and where it must be submitted to may differ.
5. The addresses at which bid documents may be obtained and tenders must be posted appear in Annexure 1.
6. The address list of various Supply Chain Management Advice Centers at which bid documents and tender bulletins may also be obtained, appears in Annexure 3; and
7. The address list of Supply Chain Management satellite offices at which tender bulletins may also be obtained, appear in Annexure 4.

3. BID INVITATIONS

BID NO.	DESCRIPTION OF SERVICE OR SUPPLIES	CONTACT DETAILS	BID DOCUMENT PRICE (NON-REFUNDABLE)	DUE AT 11H00	BID DOCUMENTS OBTAINABLE FROM	POST OR DELIVER BIDS TO  (See Annexure 1 & 2)
FTSEZ/2023/08-1/1	<p>Appointment of a Contractor for the Integrated Security Infrastructure as in Perimeter Fence &amp; Fire Breaks, Security Guard House &amp; Access Gate, and CCTV System Phase 1B &amp; 1C</p> <p><b>CIDB:</b> 7SQ or 6SQ PE or Higher</p> <p><b>Compulsory Briefing</b></p> <p><b>Date:</b> 11 September 2023 <b>Time:</b> 11h00 <b>Venue:</b> Steelpoort Extension 24 Farm Spitskop 555 KT 24°48'8.25"S 30°7'44.95"E</p> <p><b>Limpopo Economic Development Agency</b></p>	<p><b>Administrative:</b> Name: Susan Mabeba Email: <a href="mailto:suzan.mabeba@lieda.co.za">suzan.mabeba@lieda.co.za</a></p> <p><b>Technical:</b> Name: Modiegi Mphahlele Email: <a href="mailto:Modiegi.mphahlele@lieda.co.za">Modiegi.mphahlele@lieda.co.za</a></p>	non-refundable fee of R2000	29 September 2023	114	114

4. ERRATUM

**BID ERRATUM :** GAAL001

**BID NUMBER :** GAAL/096/2022/2023

**DESCRIPTION :** MODERNISATION, REPOSITIONING, DESIGN, SUPPLY, INSTALLATION, COMMISSIONING AND MAINTENANCE OF THE CLOSE CIRCUIT TELEVISION CAMERAS FOR A PERIOD OF THREE YEARS.

1. The purpose of this erratum is to correct errors that were identified within the specification requirements of the above-mentioned bid.
2. Compulsory briefing session for this bid was conducted on the 18 August 2023.
3. The error referred to in paragraph 1 above has been corrected on a bid document which is made available on GAAL website and National Treasury eTenders portal.
4. The corrected paragraph on a bid document for easy referral is **paragraph 5.4 (b) and pricing schedule**.

**5. CANCELLATIONS**

**OFFICE OF THE PREMIER**

The following bid was advertised in the tender bulletin number No.06 of 2023/2024 FY.

<b>BID NO.</b>	<b>DESCRIPTION OF SERVICE</b>	<b>DATE ADVERTISED</b>	<b>CLOSING DATE</b>	<b>REASON FOR CANCELLATION</b>
PRDP 11/2022/23	Disaster Recovery System As a Service (DraaS) Limpopo Provincial Departments	12 May 2023	06 June 2023	No acceptable bid was received.

## 6. SPECIAL NOTICE

## SALE OF STANDS IN MODITLO ESTATE

Natural Echo Investments, a subsidiary of Limpopo Economic Development Agency (LEDA) is selling 24 stands in Moditlo Wildlife Estate, in Hoedspruit.

Moditlo Wildlife Estate is approximately 30 km from the Kruger National Park. The Estate boasts various species of wildlife, including the Big 5.

The Stands are being sold directly, by the owner, with no Agents. Offers to purchase, are invited from all potential buyers.

Natural Echo Investments and LEDA reserve the right to accept or reject offers.

For viewing, and for offer to purchase forms, contact:

1. Martin Talane on 015-633-4973, or [martin.talane@lieda.co.za](mailto:martin.talane@lieda.co.za)
2. Joel Tshabalala on 015-633-4729, or [joel.tshabalala@lieda.co.za](mailto:joel.tshabalala@lieda.co.za)

Completed offer to purchase forms must be sent to the email: [disposal@lieda.co.za](mailto:disposal@lieda.co.za)

Offers to purchase sent to any other email address will be disqualified. The properties for sale are:

	PROPERTY NAME	PROPERTY STATUS	SIZE IN HECTARES
1	Portion 19 of farm Moria 83	Vacant Stand	1.0040
2	Portion 14 of farm Hoedspruit 82	Vacant Stand	0.7854
3	Portion 45 of farm Hoedspruit 82	Vacant Stand	0.9140
4	Portion 48 of farm Moria 83	Vacant Stand	0.9590
5	Portion 50 of farm Moria 83	Vacant Stand	1.0155
6	Portion 49 of farm Moria 83	Vacant Stand	1.0148
7	Portion 51 of farm Moria 83	Vacant Stand	1.0147
8	Portion 52 of farm Moria 83	Vacant Stand	1.0151
9	Portion 53 of farm Moria 83	Vacant Stand	1.0149
10	Portion 54 of farm Moria 83	Vacant Stand	1.0151
11	Portion 55 of farm Moria 83	Vacant Stand	1.0157
12	Portion 56 of farm Moria 83	Vacant Stand	0.9424
13	Portion 57 of farm Moria 83	Vacant Stand	1.0152
14	Portion 58 of farm Moria 83	Vacant Stand	0.9697
15	Portion 59 of farm Moria 83	Vacant Stand	1.0602
16	Portion 60 of farm Moria 83	Vacant Stand	1.0151
17	Portion 61 of farm Moria 83	Vacant Stand	0.9976
18	Portion 62 of farm Moria 83	Vacant Stand	0.9988
19	Portion 63 of farm Moria 83	Vacant Stand	1.0476
20	Portion 67 of farm Moria 83	Vacant Stand	0.9287
21	Portion 76 of farm Hoedspruit 82	Vacant Stand	0.9781
22	Portion 87 of farm Hoedspruit 82	Vacant Stand	1.1788
23	Portion 88 of farm Hoedspruit 82	Vacant Stand	0.9312
24	Portion 137 of farm Hoedspruit 82	Vacant Stand	0.9758



7. GENERAL NOTICE

LIMPOPO (SCM CLIENT SUPPORT CENTERS) CSD CALL CENTRE LINES FOR SUPPLIERS

DISTRICT	CALL NUMBER	CENTRE	OFFICIAL RESPONSIBLE	TIME
Capricorn	015 291 8521		Mr. Holeni TI	07H30 TO 16H30
Mopani	015 812 0256		Mr. Khosa WR	07H30 TO 16H30
Sekhukhune	013 265 1071		Mr. Sehale MS	07H30 TO 16H30
Vhembe	015 962 0014		Mrs. Moshabi A	07H30 TO 16H30
Waterberg	014 717 1376		Mrs. Tsatsi AT	07H30 TO 16H30

**ANNEXURE 1: ADDRESS LIST AND CONTACT DETAILS: LIMPOPO PROVINCIAL DEPARTMENTS**

UNIQUE REF. NO.	BID DOCUMENT REFERENCE	CONTACT DETAILS	DOCUMENTS SOLD AT:	DOCUMENTS DEPOSITED AT
100	DSDP	Tel: 015 293 6000 Fax: 015 293 6211 Website: <a href="http://www.limpopo.gov.za">www.limpopo.gov.za</a>	<b>Department of Social Development</b> , Office No. 57 Ground Floor, 21 Biccard Street POLOKWANE	Deposited in the box located at the Department of Social Development, 21 Biccard Street Polokwane
101	LPT	Tel: 015 298 7000 Fax: 015 295 7010 Website: <a href="http://www.limpopo.gov.za">www.limpopo.gov.za</a>	<b>Provincial Treasury</b> 46 Hans Van Rensburg Street, POLOKWANE and all Provincial Treasury Tender Advice Centres	Deposited in the bid box located outside a guard house at Ismini Towers, 46 Hans Van Rensburg Street, Polokwane
101A	TC/LP	Tel: 015 291 8400 Fax: 015 295 3310 Website: <a href="http://www.limpopo.gov.za">www.limpopo.gov.za</a>	<b>Provincial Treasury</b> 56 – 58 Paul Kruger Street, POLOKWANE and all Provincial Treasury Tender Advice Centres	Deposited in the bid box located at the main entrance, Finance House Building, 56-58 Paul Kruger Street, Polokwane
102	PRDP	Tel: 015 287 6000 Fax: 015 295 3840 Website: <a href="http://www.limpopo.gov.za">www.limpopo.gov.za</a>	<b>Office of the Premier</b> , 40 Hans van Rensburg Street, POLOKWANE and all SCM Advice Centres	Deposited in the bid box located at Mowaneng Building, 40 Hans van Rensburg Street, Polokwane
103	HEDP	Tel: 015 293 6000 Fax: 015 293 6211 Website: <a href="http://www.limpopo.gov.za">www.limpopo.gov.za</a>	<b>Department of Health</b> , Office No. D3 Ground Floor, Old Capricorn Building, 18 College Street, POLOKWANE and all Provincial Treasury Tender Advice Centres	Deposited in the box located at Department of Health and Social Development, 18 College Street, Polokwane
104	LPEDT	Tel: 015 290 7600/1 Fax: 015 297 4494 Website: <a href="http://www.limpopo.gov.za">www.limpopo.gov.za</a>	<b>Department of Education</b> , Corner 113 Biccard and 24 Excelsior Streets, POLOKWANE and all Provincial Treasury Tender Advice Centres	Deposited in the bid box located at the main entrance of corner 113 Biccard Street and Excelsior Street, Polokwane
105	PUDP	Tel: 015 295 1000 Fax: 015 295 1163 Website: <a href="http://www.limpopo.gov.za">www.limpopo.gov.za</a>	<b>Department of Transport and Community Safety</b> , 40 Paul Kruger Street, POLOKWANE and all Provincial Treasury Tender Advice Centres	Deposited in the bid box located at 1 <sup>st</sup> Floor, Paul Kruger Wing, 40 Paul Kruger Street, Polokwane
106	COGHSTA	Tel: 015 294 2000 Fax: 015 295 4190 Website: <a href="http://www.limpopo.gov.za">www.limpopo.gov.za</a>	<b>Department of Co-Operative Governance, Human Settlements &amp; Traditional Affairs</b> , 28 Market Street, Office No. G 74, Ground Floor, Polokwane.	Deposited in the bid box located at Hensa Towers, Cnr of Rabe and Landdros Mare Streets, Polokwane
107	DSAC	Tel: 015 284 4000 Fax: 015 284 4514 Website: <a href="http://www.limpopo.gov.za">www.limpopo.gov.za</a>	<b>Department of Sport, Arts and Culture</b> Olympic Towers, Corner Rabe and Biccard Street, POLOKWANE and all Provincial Treasury Tender Advice Centre	Deposited in the bid box located at the main entrance of Olympic Towers, Corner 21 Rabe and Biccard Street, Polokwane

**LIMPOPO PROVINCIAL TENDER BULLETIN NO 22 of 2023/24 FY 01 SEPTEMBER 2023**

108	LEDET	Tel: 015 293 8300 Fax: 015 293 8319 Website: <a href="http://www.limpopo.gov.za">www.limpopo.gov.za</a>	<b>Department of Economic Development, Environment &amp; Tourism</b> , 90 Bok Street, POLOKWANE and all SCM Advice Centres	Deposited in the bid box located at the main entrance of Evidiki Towers, 19 Biccadd Street, Polokwane
109	LDPW & WODP	Tel: 015 284 7000 Fax: 015 284 7031 Website: <a href="http://www.limpopo.gov.za">www.limpopo.gov.za</a>	<b>Department of Public Works, Roads and Infrastructure</b> ; Towers, 43 Church Street, POLOKWANE and all Provincial Treasury Tender Advice Centres	Deposited in the bid box located at Corner Blaawberg and River Street Ladanna Polokwane 0699 Private Bag X9490 Polokwane 0700
110	ACDP	Tel: 015 294 3000/30/60/90/20 Fax: 015 294 4506 Website: <a href="http://www.limpopo.gov.za">www.limpopo.gov.za</a>	<b>Department of Agriculture</b> , Temo Towers, 69 Biccadd Street, POLOKWANE and all Provincial Treasury Tender Advice Centres	Deposited in the bid box located at the main entrance of AgriVillage, 69 Biccadd Street, Polokwane

**ANNEXURE 2: ADDRESS LIST AND CONTACT DETAILS: LIMPOPO PUBLIC ENTITIES**

UNIQUE REF. NO.	BID DOCUMENT REFERENCE	CONTACT DETAILS	DOCUMENTS SOLD AT:	DOCUMENTS DEPOSITED AT
111	RFB: LIMP	Tel: 015 293 3621 Fax: 015 293 3660 Website: <a href="http://www.golimpopo.com">www.golimpopo.com</a>	<b>State Information Technology Agency (SITA)</b> Limpopo Office, Moolman Building, 27 Market Street, POLOKWANE, 0699	The bid box is located at the Main Entrance of the Moolman Building, 27 Market Street, Polokwane
112	LTA	Tel: 015 293 3600 Fax: 015 293 3655 Website: <a href="http://www.golimpopo.com">www.golimpopo.com</a>	<b>Limpopo Tourism Agency</b> , ERF 92/688, Portion 2 Southern Gateway, Ext 4, N1 Main Road, Polokwane 0699	The bid box is located in the offices ERF 92/688, Portion 2 Southern Gateway, Ext 4, N1 Main Road, Polokwane 0699
113	LGB	Tel: 015 295 5581 Fax: 015 295 3566 Website: <a href="http://www.lgb.org">www.lgb.org</a>	<b>Limpopo Gambling Board</b> , 08 Hans van Rensburg Street, POLOKWANE, 0699	The bid box is located at the main entrance, 8 Hans van Rensburg Street, Polokwane, 0699
114	LEDA	Tel: 015 633 4700 Fax: 015 633 4854 Website: <a href="http://www.leda.co.za">www.leda.co.za</a>	<b>Limpopo Economic Development Agency</b> Enterprise Development Finance, Main Road Lebowakgomo	The bid box is located at the main entrance, Enterprise Development Finance, Main Road Lebowakgomo
115	RAL	Tel: 015 284 4600 Fax: 015 284 4701 Website: <a href="http://www.ral.co.za">www.ral.co.za</a>	<b>Road Agency Limpopo (RAL)</b> , RAL Towers, 26 Rabe Street, POLOKWANE, 0700	The bid box located in the entrance foyer (ground floor) of RAL Towers, at 26 Rabe Street, Polokwane
116	GAAL	Tel: 015 288 0122 Fax: 015 288 0346 Website: <a href="http://www.gaal.co.za">www.gaal.co.za</a>	<b>Gateway Airports Authority Limited</b> , N1 Road to Louis Trichardt, Army Base, POLOKWANE International Airport, Polokwane, 0700	The bid box is located in the main entrance, the ground floor of the administration building, Polokwane International Airport, Army Base
117	VIVET	Tel: 015 963 3156 Fax: 015 963 3154 Website: <a href="http://www.vhembecollege.edu.za">www.vhembecollege.edu.za</a>	<b>Vhembe TVET College</b> , Central Office, Site No 203 SIBASA 0970	<b>Vhembe TVET College</b> , Central Office, Site No 203 SIBASA 0970
118	WTVET	Tel: 015 491 8581/8602 Fax: 015 491 8579 Website: <a href="mailto:www.procurement@waterbergcollege.co.za">www.procurement@waterbergcollege.co.za</a>	<b>Waterberg FET College</b> , Central Office, 36 Hooge Street Street, Mokopane, 0600	<b>Waterberg FET College</b> , Central Office, 36 Hooge Street Street, Mokopane, Private Bag x 2449, Mokopane 0600
119	GNT	Tel. 015 291 2641 Fax. 015 291 2648	No. 130a Marshall Street, Polokwane.0700	Great North Transport No. 130 Marshall Street, Polokwane.0700
120	MT	Tel. 015 2907715/7772	<b>Mvula Trust</b> 25 Rhodesdrift Street, Rhodesdrift Office Park, Bendor Ext 30, Polokwane	<b>Mvula Trust</b> 25 Rhodesdrift Street, Rhodesdrift Office Park, Bendor Ext 30, Polokwane
121	CCTVET	Tel.015 230 1800 Fax. 015 291 2767	Capricorn College for TVET 16 Market Street, Polokwane	Private Bag Bag X9674 Polokwane0700
122	IDT	Tel: 015 295 0000 Fax: 015 295 6559	<b>Independent Development Trust</b>	<b>Independent Development Trust</b>

**LIMPOPO PROVINCIAL TENDER BULLETIN NO 22 of 2023/24 FY 01 SEPTEMBER 2023**

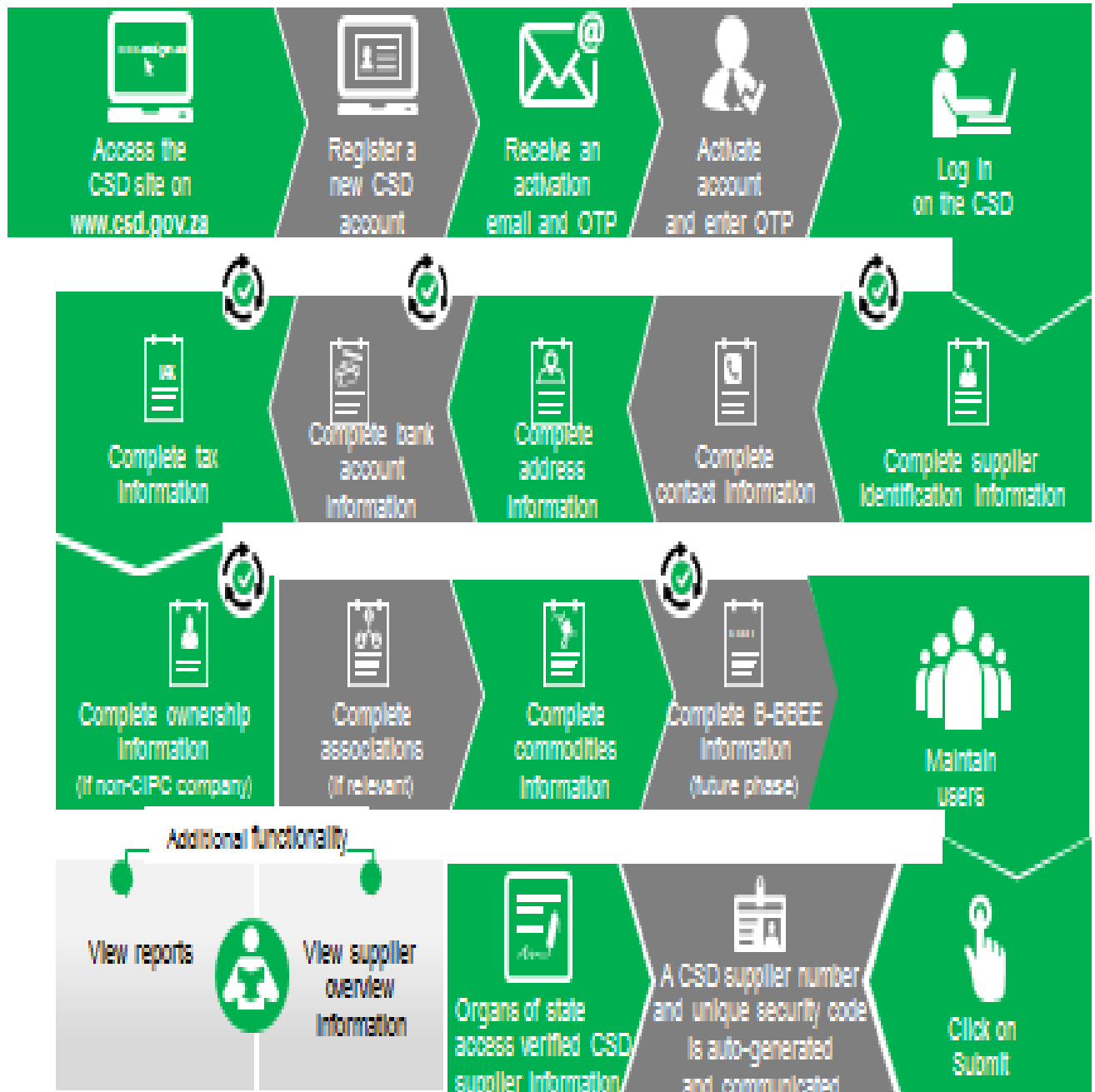
---

			22 Hans van Rensburg Street, Polokwane, 0700	P.O.Box 55386 Polokwane 0700
123	DBSA	scmqueries@dbsa.org	<b>Development Bank of Southern Africa</b> Welcome Centre 1258 Lever Road Midrand	<b>Development Bank of Southern Africa</b> Welcome Centre 1258 Lever Road Midrand

**ANNEXURE 3: ADDRESS LIST AND CONTACT DETAILS: PROVINCIAL TREASURY SCM CLIENT SUPPORT CENTRES**  
 (CSD registration, assistance with SBD forms completion, and copies of the Provincial Tender Bulletin can be accessed from the following Limpopo Provincial Treasury District Centers):

<b>PROVINCIAL TREASURY SUPPLY CHAIN MANAGEMENT CLIENT SUPPORT CENTRES</b>	
<p><b>HEAD OFFICE</b></p> <p>SCM CLIENT SUPPORT                      56 – 58 Paul Kruger Street                      POLOKWANE                      Private Bag x9494  <b>POLOKWANE, 0700</b>  <b>Tel No. (015) 291 8400</b></p> <p>Contact: <b>Ms. L. D. Msimeki @ Tel: 015 291 8755</b></p>	<p><b>Capricorn SCM Client Support Centre</b></p> <p>Limpopo Provincial Treasury                      56-58 Paul Kruger Street                      Private Bag x9494  <b>POLOKWANE, 0700</b>  <b>Tel No. (015) 291 8400</b></p> <p>Contact Person: <b>Mr. T.I Holeni</b></p>
<p><b>Vhembe SCM Client Support Centre</b></p> <p>Limpopo Provincial Treasury                      Government Building Complex                      BLOCK E GROUND FLOOR  <b>THOHOYANDOU, VENDA</b>                      Tel: (015) 962 1752                      Fax: (015) 962 1282</p> <p>Contact Person: <b>Ms. A Manena</b></p>	<p><b>Mopani SCM Client Support Centre</b></p> <p>Limpopo Provincial Treasury                      Private Bag X 1973  <b>GIYANI, 0826</b>                      Tel: (015) 812 0149                      Fax: 086 219 7905</p> <p>Contact Person: <b>Mr. W.R Khosa</b></p>
<p><b>Waterberg SCM Client Support Centre</b></p> <p>Limpopo Provincial Treasury                      98 Nelson Mandela Street                      Decimale Building  <b>MODIMOLLE</b>                      Tel: (014) 717 5837                      Fax: (014) 717 5670</p> <p>Contact Person: <b>Mr. AT Tsatsi</b></p>	<p><b>Sekhukhune SCM Client Support Centre</b></p> <p>Limpopo Provincial Treasury                      Lefa Centre, Schoonoord Road  <b>JANE FURSE</b>                      Tel: (013) 265 1344                      Fax: (013) 265 1354</p> <p>Contact Person: <b>Mr. M. S. Sehale</b></p>

# Supplier Self-Registration Process



Auto verification of supplier information with SARS, GPC etc.